



## Concealed Mixer Set

LE-961S

### Description

Concealed bath/shower mixer set with diverter mixer, bath spout, 3 function shower head and shower arm. 1/2" BSP female iron mixer connection ends. Chrome plated.

### Features and Benefits

- Stainless steel, chrome plated mixer faceplate
- Brass shower arm with wall flange
- Shower head with pressure compensating 7.5Ltr 2GPM (US) flow restrictor for water and energy saving
- 35mm smooth action ceramic disc cartridge
- Mixer provided with plaster sleeve for ease of installation and product protection
- With anti-lime spray nipples. Simply rub in operation to remove built up limescale
- Three spray functions
  - Classicspray pattern
  - Pulsating spray
  - Soft aerated spray
- Diverter bath/shower mixer
- Bath spout with 1/2" BSP male iron connection end
- 140mm (nominal) throw shower arm with pressed steel wall flange. 1/2" BSP male iron connection end
- Easy Cleaning: Simply use a mild soapy solution and buff with a soft rag
- Mixer tested to 1,600kPa 300PSi static pressure

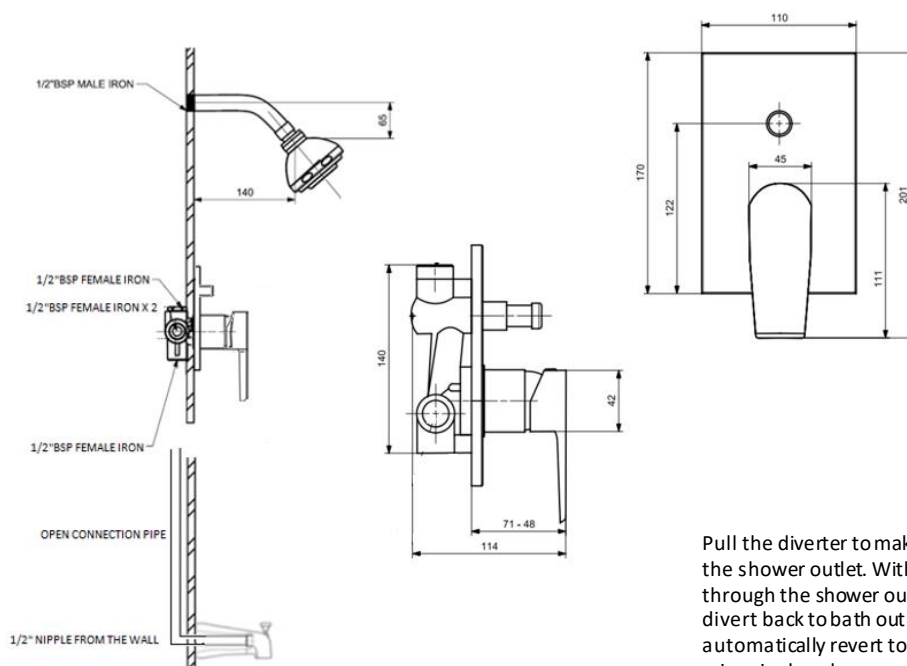
### Finish

Chrome plated

### Warranty

10-year guarantee

## Dimensions



Pull the diverter to make the water flow through the shower outlet. With the water still running through the shower outlet. Pull the diverter to divert back to bath outlet. The diverter will automatically revert to the bath outlet when the mixer is closed

## Supply Requirements

Recommended supply pressure, minimum 100kPa (1 Bar, 14.5PSI) to maximum 400kPa (4 Bar, 58PSI)

## Spare Parts

1. 35mm raised distributor base cartridge. E-35-RAISED
2. Leo handle with indice and mounting screw. Not for sink mixers. Chrome plated. E-LE-001
3. Christine and Leo concealed bath/shower diverter mechanism. Chrome plated. E-LE-005
4. Faceplate for Christine and Leo concealed bath/shower diverter mixer. Chrome plated E-LE-004
5. 3 function shower head S-0983
6. Shower arm WO-024
7. Tub spout plain. 1/2" female iron connection end. Chrome plated. WO-0601

